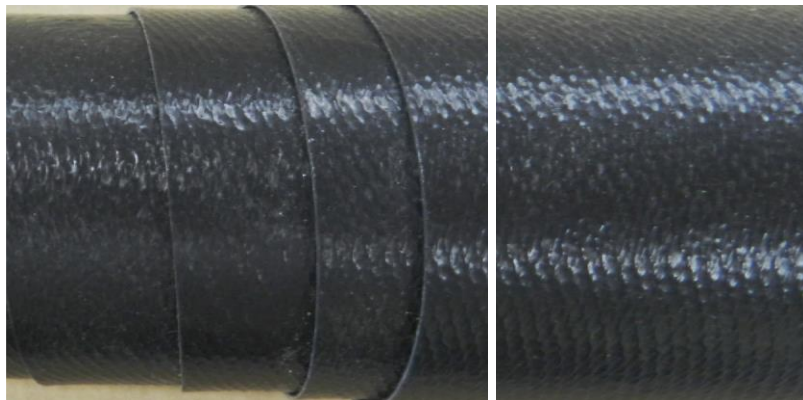


## ChemShield® 7920 Material Specification



### Property Ratings

Resistance to Vibrations	Very Good
Resistance to Movements	Very Good
Resistance to Abrasion	Very Good
Resistance to Solvents	Excellent
Resistance to Oils	Excellent
Resistance to Alkali	Excellent
Resistance to Dilute Acids	Excellent
Resistance to Concentrated Acids	Excellent
Resistance to Flames	Not Recommended
Resistance to Weather / UV	Excellent

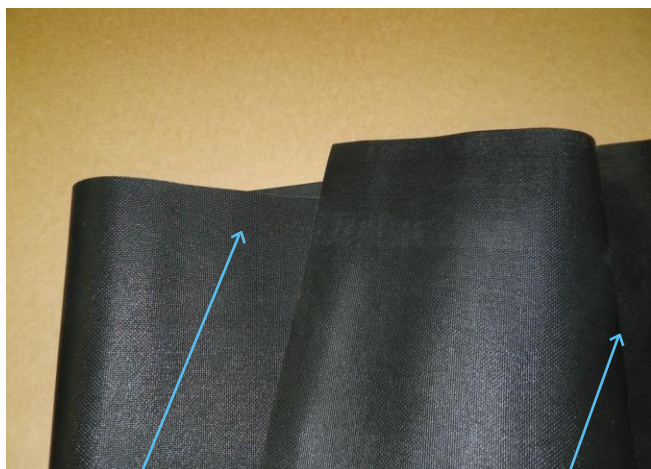
### Physical Properties

#### Materials of Construction

Zero Porosity PTFE Film Laminated to a Flexible PTFE Coated Fiberglass Cloth

<b>Max. Operating Temperature:</b>	600°F (316°C)
<b>Min. Operating Temperature:</b>	-80°F (-62°C)
<b>Weight:</b>	29 oz/yd <sup>2</sup> (984 g/m <sup>2</sup> )
<b>Thickness:</b>	0.060" (1.52mm)
<b>Tensile Strength:</b>	74 lbs/in (1626 N/50mm)
<b>Tear Strength:</b>	59 lbs/in (262 N/50mm)
<b>Maximum Pressure:</b>	5 PSI (3518 mm wc)
<b>Minimum Pressure:</b>	-3 PSI (-2110 mm wc)

### ChemShield® 7920 Materials



#### PTFE Corrosion / Gas Barrier

Weight: 29 oz/yd<sup>2</sup> (984 g/m<sup>2</sup>)  
 Thickness: 0.020" (0.51mm)  
 Tensile Strength: 87 lb/in (295 N/50mm)  
 Tear Strength: 22Lb (99.8 N)

#### PTFE Coated Fiberglass Cloth

The picture at left shows the two components that make up the ChemShield® 7920 material. The outer PTFE coated fiberglass cloth provides the load bearing component, while the inner PTFE film provides the gas and corrosion barrier. The two layers are laminated together to form a single layer composite material capable of resisting stress cracking while providing flexibility and temperature resistance.

Our ChemShield® 7920 is our best fiberglass reinforced product. The 20 mil PTFE barrier is the thickest in the market and provides excellent chemical resistance for demanding applications. Our ChemShield® 7920 material is the best choice for heavy duty chemical service with moderate abrasion resistance requirements.

ChemShield® and FlexCom® are registered trademarks of Flexible Compensators, Inc. This information is supplied in good faith and is based on information currently available.